

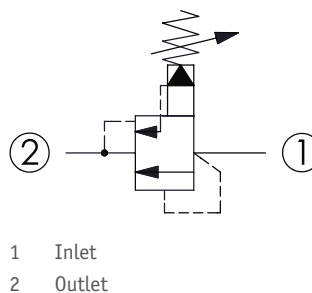
CRQ-3A - Relief valve

Kick-down, pilot operated, balanced piston relief valve

1 Available versions

Ordering example:

CRQ-3A	-20	-A	-L
Type	Operation	Spring	Option



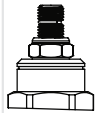
Operation

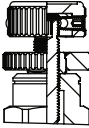
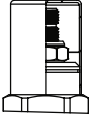
Coding	Description
20	Standard type

Spring

Coding	Pressure (bar)	
	Adjustment range	Standard setting
A	7 - 210	70
B	3.5 - 105	70
C	10.5 - 420	70
D	1.7 - 55	28
E	1.7 - 28	14
N	4 - 55	28
Q	4 - 28	14
W	10.5 - 315	70

Option

Coding	Option	Drawing
L	Leakproof hex. socket screw	

Coding	Option	Drawing
K	Handknob with lock knob	
C	Stainless steel tamper resistant cover	

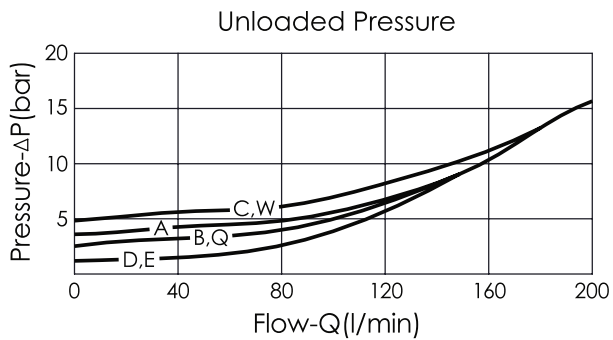
2 Technical data

Operating pressure p_{max}	350 bar
Flow rate Q_{max}	200 l/min
Installation torque	60 - 70 Nm
Cavity	T-3A
Weight	<ul style="list-style-type: none"> ▪ L: 0.26 kg

i INFORMATION

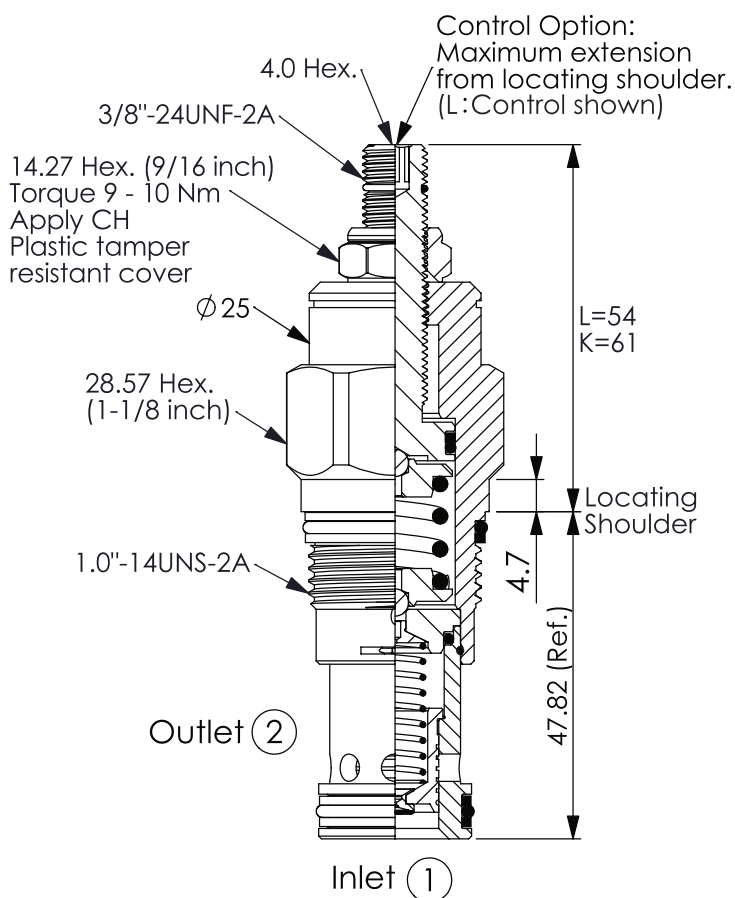
Maximum leakage approximately (50 cm³/min/70 bar)

Characteristic lines



3 Dimensions

All dimensions in mm, subject to change.



4 Other information

see Technical information HAWE cartridge valves: D 8219

see Recommendation for hydraulic fluid: D 5488/1

